
Experiment A2

Electronics I

Procedure

Deliverables: Checked lab notebook, demonstration of working circuits, brief technical memo

Recommended Reading: Chapters 3 and 4; Section 14.1 of the textbook

Overview

Most of the sensors and transducers used in modern engineering applications are electronic, meaning they convert the physical parameter of interest to a voltage or current. The purpose of this lab is to familiarize you with the electronic equipment and techniques that you will need to connect and operate various sensors.

The following lab exercises are to be performed *individually*. Do NOT build your partner's circuit for them!

Part I: Let there be Light!

You will begin this lab by learning how to measure basic electrical parameters (resistance, current, and voltage) using a digital multimeter (DMM).

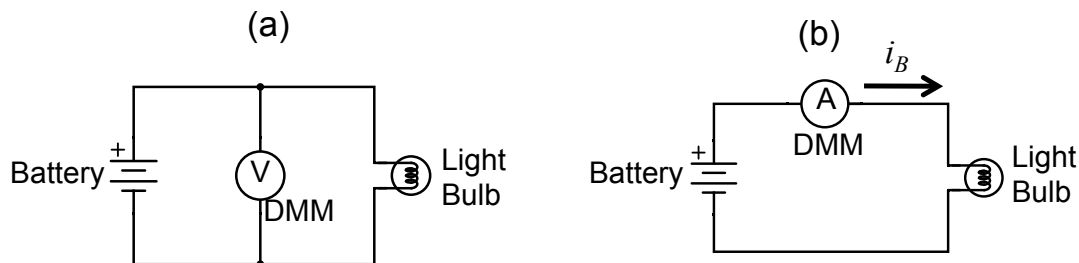


Figure 1 – Circuits used for measuring (a) voltage V_B across and (b) current i_B through the light bulb.

1. Use the orange Extech Handheld DMM to measure the resistance R_{OFF} of the light bulb when the bulb is off. Turn the clicker knob to the appropriate resistance range. Record the value in your lab notebook.
2. Sketch the circuit shown in Figure 1a in your lab notebook.
3. Construct the circuit shown in Figure 1a using the DMM, light bulb, batteries, and alligator cables.
4. Use the DMM to measure the DC voltage V_B , and record the value in your lab notebook.
5. Sketch the circuit shown in Figure 1b in your lab notebook.
6. Construct the circuit shown in Figure 1b using the DMM, light bulb, batteries, and alligator patch cables.
7. Use the DMM to measure the DC current i_B , and record the value in your lab notebook.

8. Calculate the resistance of the light bulb when it is on, $R_{ON} = V_B/i_B$, using your **measured** values of current i_B and voltage V_B and record it in your lab notebook.
9. Calculate the power dissipated in the bulb $\dot{q}_B = i_B \cdot V_B$ using your **measured** values of current i_B and voltage V_B and record it in your lab notebook. Be sure to include appropriate units!

Part II: Voltage Divider

The simple circuit in Part I was constructed using long cables. For more complex circuits, long cables can easily become a jumbled rats' nest. To avoid such a mess, engineers typically use a "solderless breadboard" or "proto-board", which greatly reduces the number of cables and wires.

In this portion of the lab, you will construct the circuit shown in Figure 2 using a solderless breadboard. You will then measure V_{out} as a function of the resistance R_2 . Copy the circuit diagram and table into your lab notebook.

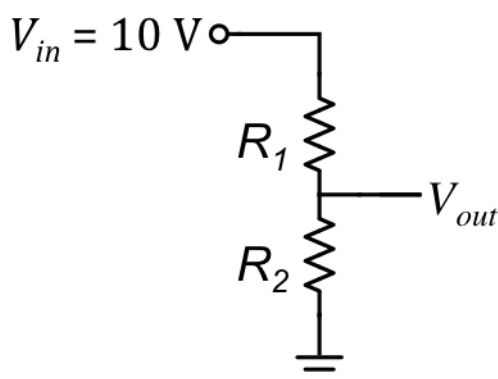


Figure 2 - Voltage divider circuit.

Table 1		
R_2 (Ω)	R_2 (measured)	V_{out}
10		
100		
470		
1k		
2k		
10k		

The output voltage V_{out} is related to the input voltage V_{in} by the voltage divider equation

$$V_{out} = \frac{R_2}{R_1 + R_2} V_{in}. \quad (1)$$

Copy this equation down into your lab notebook. Note that $V_{out} \leq V_{in}$, regardless of the values of R_1 and R_2 .

Procedure

1. First, you will practice making simple connections using the breadboard and taking measurements with the multimeter. Take two 1 k Ω resistors from the resistor set. Using the orange Extech handheld digital multimeter (DMM), measure their resistances and record the values in your lab notebook.
 - a. Connect the two resistors in *series* on the breadboard, and measure the equivalent resistance of the two in series.
 - b. Reconnect the two resistors in *parallel* on the breadboard, and measure the equivalent resistance of the two in parallel.
 - c. Do these measurements make sense? If not, ask the TA or lab instructor for help.
 - d. Return the resistors to the appropriate bin.
2. Sketch the circuit shown in Figure 2 in your lab notebook, and write down the voltage divider equation, Eq. (1), in your lab notebook.
3. Take a 1 k Ω resistor from the resistor set. Using the orange Extech handheld digital multimeter (DMM), measure its resistance and record the value in your lab notebook. This resistor will be used for R_1 in the voltage divider circuit. Carefully, insert it into the bread board in the correct position. (Refer to Appendix B for an explanation of the bread board.)
4. Copy Table 1 into your lab notebook with a column for values of R_2 and a column for V_{out} .
5. Locate the first resistor R_2 in the table. Remove it from the bin. Measure its resistance and record the value in the table in your lab notebook.
6. Insert this resistor into breadboard as R_2 to form the circuit shown in Figure 2. Use the breadboard's built-in power supply to provide $V_{in} = 10$ V to the circuit. Make sure the other end of the circuit is properly connected to ground.
7. Using the orange Extech handheld DMM, measure V_{out} relative to ground and record the value in your table.
8. Remove the resistor R_2 , straighten it out, and **put it back in the appropriate bin.**
9. Repeat the procedure until you have cycled through the entire table of resistors.
10. Turn off the breadboard power supply. Disconnect power supply wires from breadboard.
11. Remove the resistor R_1 , straighten it out, and **put it back in the appropriate bin.**

Part III: Photo-sensor

In this portion of the lab, you will wire up a CdS photocell in a voltage divider circuit. The result will be a transducer that converts light intensity to a voltage.

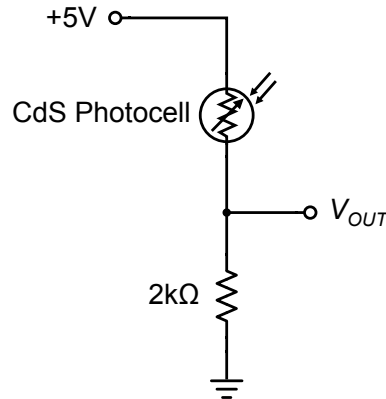


Figure 3 – A CdS photocell is wired up in a voltage divider circuit. The output voltage V_{OUT} depends on the light intensity incident on the photocell.

1. Sketch the circuit diagram shown in Figure 3 in your lab notebook.
2. Take a CdS photocell out of the resistor kit on your lab bench. Use the orange Extech handheld DMM to measure its resistance.
3. Cover the “active area” of the photocell (the zig-zag pattern on top of the cylinder) with your finger and record the resistance R_{dark} in your lab notebook.
4. Expose the active area to light and record the resistance R_{light} . You should see that the resistance decreases significantly when it is exposed to light.
5. Take a 2 kΩ resistor from the resistor set. Using the orange Extech handheld digital multimeter (DMM), measure its resistance and record the value in your lab notebook. This resistor will be used for R_2 in the voltage divider circuit. Carefully, insert it into the bread board in the correct position.
6. Use the breadboard to create the photocell voltage divider circuit shown in Figure 3. Make sure you use the fixed 5V DC power supply on the breadboard.
7. Cover the “active area” of the photocell with your finger, then expose the active area to light. Observe the change in output voltage V_{out} as you do this. Does it behave as you expect it to?
8. Show your working circuit to the TA.

Part IV: 3-Way Light Switch

Long hallways and staircases in houses typically will have the ceiling lights wired up to a “3-way switch circuit”. Such a circuit allows the lights to be turned ON or OFF from separate switches on opposite ends of the hallway or staircase. This circuit requires special switches called “single pole, double throw” (SPDT).

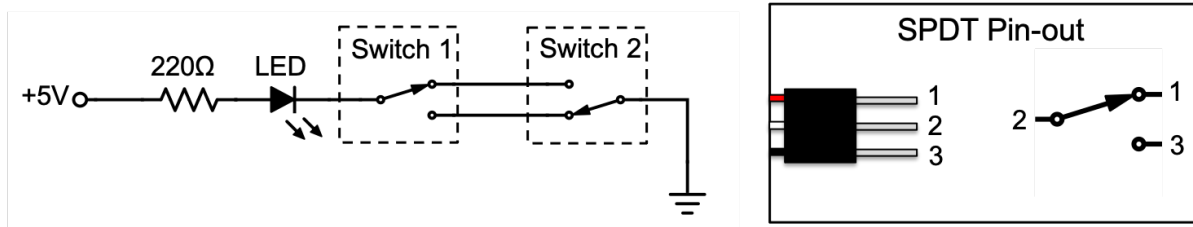


Figure 4 – (Left) A 3-way switch circuit allows the LED to be turned ON and OFF using either switch. (Right) The pin-out shows how the physical pins are connected to the circuit components.

1. Sketch the circuit diagram and pin-out shown in Figure 4 in your lab notebook.
2. Determine how the SPDT toggle switch works. Focus your engineering awareness on the drawing in **Appendix C**, and think about how the mechanical action of flipping the switch will change the electrical connections between the terminals on the bottom.
3. Use the handheld DMM to measure the resistance between the different pins and toggle the switch. Does the resistance of the switch behave as you expect it to?
4. Use the breadboard to construct the 3-way switch circuit shown above in Fig. 4.
 - a. Make the connections between the various circuit elements. Start by going from the +5V DC supply to a 220 Ohm resistor.
 - b. The LED has a particular orientation or *polarity*: the longer wire on the LED (known as the “anode”) must be connected to the positive side of the circuit. If you plug it in backwards, it will not work.
 - c. Note that the small circles on the switches in the circuit drawing corresponding to physical pins or wires, as shown on the right side of Fig. 4.
5. **Demonstrate the working circuit to the Lab Instructor.** The circuit must be built as shown in Figure 4. Failure to build the circuit correctly before the end of lab will result in a zero for this week’s lab notebook score.

Data Analysis and Deliverables

Create plots and other deliverables listed below. Save the plots as PDF or EPS files, import them into either Microsoft Word or LaTeX, and add an intelligent, concise caption. Make sure the axes are clearly labeled with units. Plots with multiple data sets on them should have a legend.

Additionally, write 1 – 3 paragraphs describing the items below. Any theoretical formula you used in your analysis should be included as a numbered equation within these paragraphs.

1. A table containing the parameters you measured and calculated for the light bulb (OFF resistance, ON resistance, voltage, current, and power). **Be sure to include units!**

Pro-tip: It is much easier to create a properly formatted table using LaTeX. If you are tired of fighting with MS Word, now might be the time to make the switch.

2. Plot your measured data from Part II, V_{out} vs. R_2 , with the theoretical voltage divider equation plotted on top. Be sure to include the theoretical equation in one of your paragraphs.

Talking Points - Please address the following writing prompts in your paragraphs.

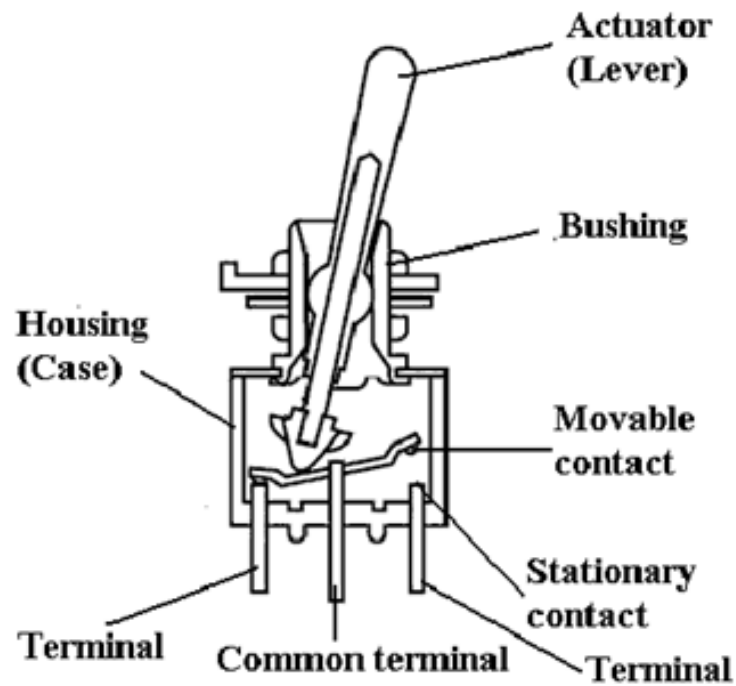
- Compare the resistance of the bulb when it is ON to the resistance when it is OFF. Why do you think it is different?
- Include theoretical equations used to generate plots and other deliverables. (Full derivations are not necessary.)

Appendix A

Equipment - 2 sets of equipment per lab bench

- 1.5V AA Battery
- Single Christmas light
- 2 – 12” red/black minigrabber patch cables
- Extech Handheld Multimeter (DMM) w/ minigrabber cables
- Powered Breadboard
- Breadboard jumper wires
- Jameco Resistor kit
- CDS Cell 520nm 4 ~ 11 kOhms @ 10 lux (Digikey # PDV-P8101-ND)
- LED
- SPDT switches wired and mounted in panel

Appendix C



Appendix D

